

## Accessories

Information on selected accessory products





## BDS120

### Mini-hand transmitter, bidirectional

2-channels, incl. key ring, with orange LED, battery CR2032

Item No.: 2905032  
EAN: 4250035413894  
Dimensions: 35x65x10 mm

## BHS121

### Mini-hand transmitter, unidirectional

2-channels, incl. key ring, with red LED, battery CR2032

Item No.: 2905030  
EAN: 4250035413887  
Dimensions: 35x65x10 mm







## BDS140

Hand transmitter bidirectional,  
4-channels

with orange LED, battery 1,5 V AAA

Item No.: 2905122  
EAN: 4250035414761  
Dimensions: 43x94x17 mm

## BDS140 SET

Hand transmitter bidirectional,  
4-channels

with orange LED, incl. wall fixation and  
clip for car sun blind, battery 1,5 V AAA

Item No.: 2905034  
EAN: 4250035413900  
Dimensions: 43x94x17 mm





## BDS150

Hand transmitter bidirectional,  
5-channels

with orange LED, incl. door position display,  
battery 1,5 V AAA

Item No.: 2905123  
EAN: 4250035414778  
Dimensions: 43x94x17 mm

## BDS150 SET

Hand transmitter bidirectional,  
5-channels

with orange LED, incl. wall fixation and clip for car sun  
blind, with door position display, battery 1,5 V AAA

Item No.: 2905036  
EAN: 4250035413917  
Dimensions: 43x94x17 mm





## BDS591

### Radio code switch bidirectional

Radio code switch, illuminated, 10-channels, with robust keyboard of stainless steel. Battery: 2 x 1,5 V AAA

Item No.: 2905980

EAN: 4250035415164

Dimensions: 65x105x17 mm





## BHS591

### Radio code switch Blue *code*

Radio code switch, illuminated, 4-channels, IP 65.

Battery: 1 x 9 V monobloc battery

Item No.: 2901906

EAN: 4250035411883

Dimensions: 80x110x40 mm





## FFL12

### Wireless finger scan

2-channels, controlling 2 openers with fingerprint, up to 12 fingerprints storable, indication through 3 LED lights, battery 4 x 1,5 V AAA

Item No.: 437678

EAN: 4250035412422

Dimensions: 80x130x45 mm







## BDE415

### Plug-in receiver bidirectional

1-channel, with potential-free output, for simple conversion of extern motors, incl. connecting cable 1,9 m, potential-free contact, max. 24 V/1 A DC

Item No.: 2905975

EAN: 4250035415294

Dimensions: 60x110x43 mm





## Berner-Box

Interface between LAN or WLAN / Internet and the Berner BiSure radio technology. In conjunction with the Berner Secure Mobile App you control your Berner BiSure radio products with your smartphone or tablet.

Item No.: 2906294

EAN: 4250035415133

Dimensions: 145x75x60 mm





## BHS153

### Mini-hand transmitter Blue *opal*

5-channel, in metallic housing, with blue LED,  
battery 2 x LR932

Item No.: 2901893  
EAN: 4250035410039  
Dimensions: 25x53x10 mm







## BHS211

### Hand transmitter Blue *car1*

1-channel, to be installed in the car cigarette lighter socket, with blue LED, battery 1 x CR2025

Item No.: 2901895  
EAN: 4250035410848

## BHS221

### Hand transmitter Blue *car2*

2-channel, to be installed in the car cigarette lighter socket, with blue LED, battery 1 x CR2025

Item No.: 2901896  
EAN: 4250035410855





## BHS421

### Internal radio switch Blue *push 2*

2-channels to control 2 openers, switch to turn on/off the connected control elements. Connection possibility of max. 2 control elements. Battery 1 x CR2032

Item No.: 2901898

EAN: 4250035410909

Dimensions: 80x110x30 mm







## CTR1B

### Code switch, 1-channel

with illuminated keyboard, to control one single opener drive, together with control unit in separate housing, relay potential free, up to 3 keyboards can be connected, voltage 24 V or 230 V

Item No.: 436222

EAN: 4250035406643

Dimensions keyboard: 80x110x20 mm

Dimensions control unit: 140x130x50 mm

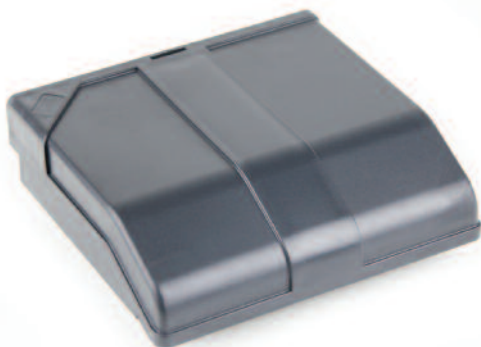
## CTR2B

### Code switch, 2-channels

the same as CTR1B, however to control 2 opener drives

Item No.: 436223

EAN: 4250035406636



Evaluation electronics



## TTR1 / TTR1000

### Transponder 1-channel

(non-contact) to control one single opener drive, external unit together with control unit in separate housing, relay potential free, voltage 230 V, incl. 2 transponder keys, up to 100 / 1000 keys can be logged in/out, without connecting cable. When mounting on metal, please order along intermediate case.

Item No.: 437047 / 2902032

EAN: 4250035404489 / 4250035410176

Dimensions external unit: 80x110x20 mm

Dimensions control unit: 140x130x50 mm



## TS

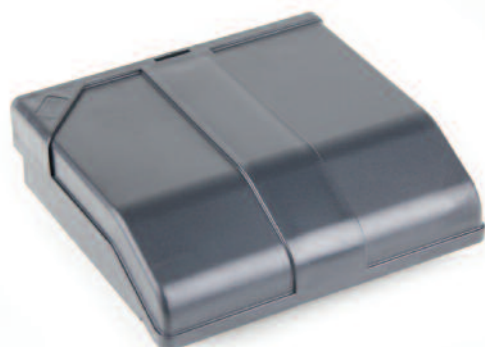
### Transponder key

for TTR1 and TTR1000

Item No.: 437053

EAN: 4250035404496

Dimensions: ø10 mm, length 45 mm



Evaluation electronics





## IT1b

### Interior push button

with illuminated impulse button and 7 m connecting cable, 2-core (available for GA103-501 V2)

Item No.: 436267  
EAN: 4250035405899  
Dimensions: 40x80x25 mm



## SLÜ23/2

### Mini key switch on-wall

2-pole, 2 closing contacts, cylinder 40 mm, 30/10, IP54

Item No.: 2902100

EAN: 4250035411951

Dimensions: 73,5x73,5x45 mm





## SLÜ24/2

### Mini key switch in-wall

2-pole, 2 closing contacts, cylinder 40 mm, 30/10, IP54

Item No.: 2902101

EAN: 4250035411968

Dimensions: 90x100x2 mm

Dimensions in-wall box: ø60 mm, depth: 55,5 mm



## EL101

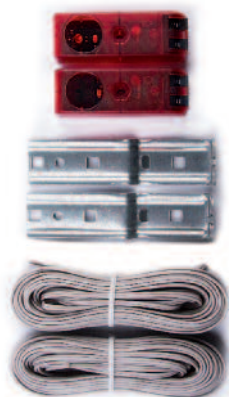
### One-way photocells 24 V

for internal use as an additional safety device.  
IP 21 rating, connecting cable: 2 x 10 m, 2-core,  
for GA103-501 V2

Item No.: 436294

EAN: 4250035405813

Dimensions: 30x85x25 mm





## EWLS AP4

### One-way photocells 24 V

on-wall, for external use, IP 44 rating, view 180° adjustable, perfect alignment with LED, 24 V AC/DC, max. 4 pairs adjustable, transmitter - receiver, up to a reach of 15 m, per pair, for all drives except GA103

Item No.: 2902148

EAN: 4250035410572

Dimensions: 110x36x31 mm



## EL301

### One-way photocells 24 V

One-way photocells 24 V, for internal/external use as an additional safety device. IP 65 rating, connecting cable: 2 x 10 m, 2-core, for GA103-501 V2, DA20, DA40, DA40-L, C300-C800

Item No.: 436299

EAN: 4250035405820

Dimensions: 45x85x30 mm







## TL40RD/GR

LED traffic lights  $\varnothing$ 125 mm

Energy saving and durable LED traffic lights incl. mounting fixation, can be swiveled by 180°, 230 V

Item No.: 637537  
EAN: 4250035411906  
Dimensions: 170x467 mm



## SLK-L

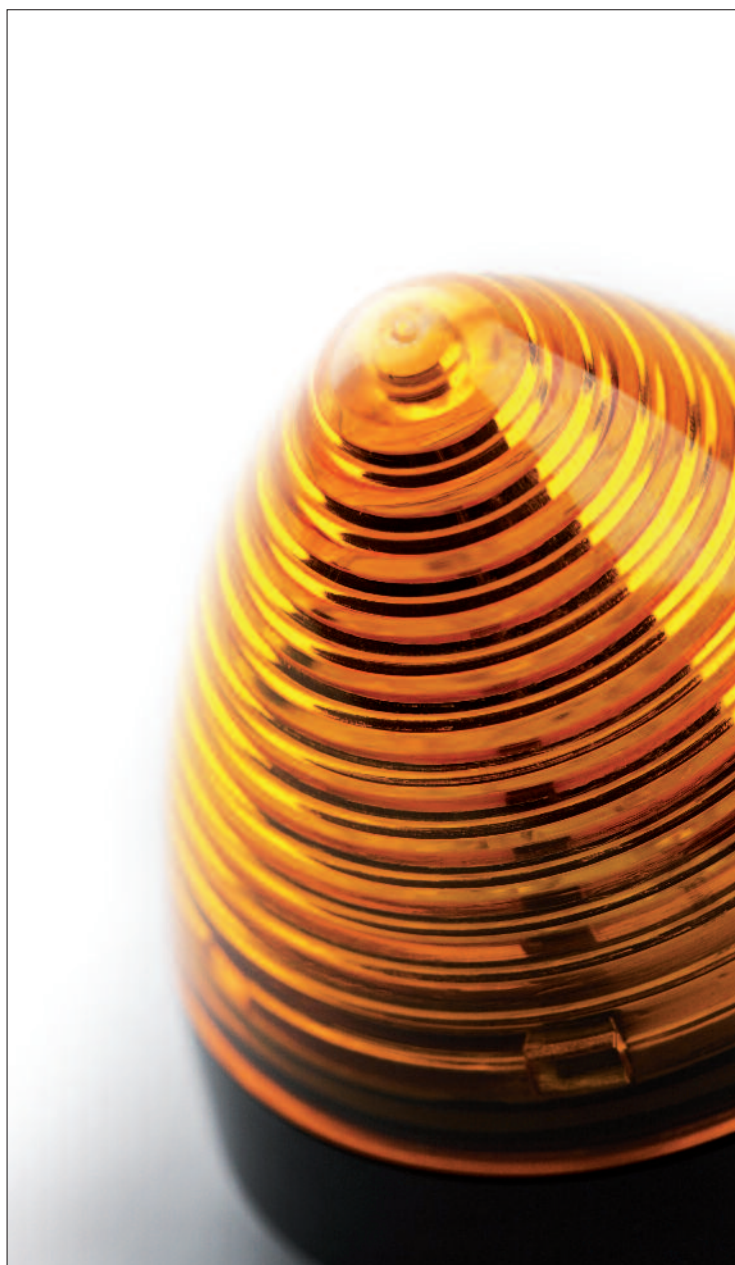
### LED signal light yellow

Voltage: 24 V DC reverse polarity protection, max. 0,5 W,  
Optionally wall mounting fixation for right-angle  
mounting available (WH-SLK)

Item No.: 436515

EAN: 4250035412033

Dimensions: ø58 mm, height 60 mm





## BL RB

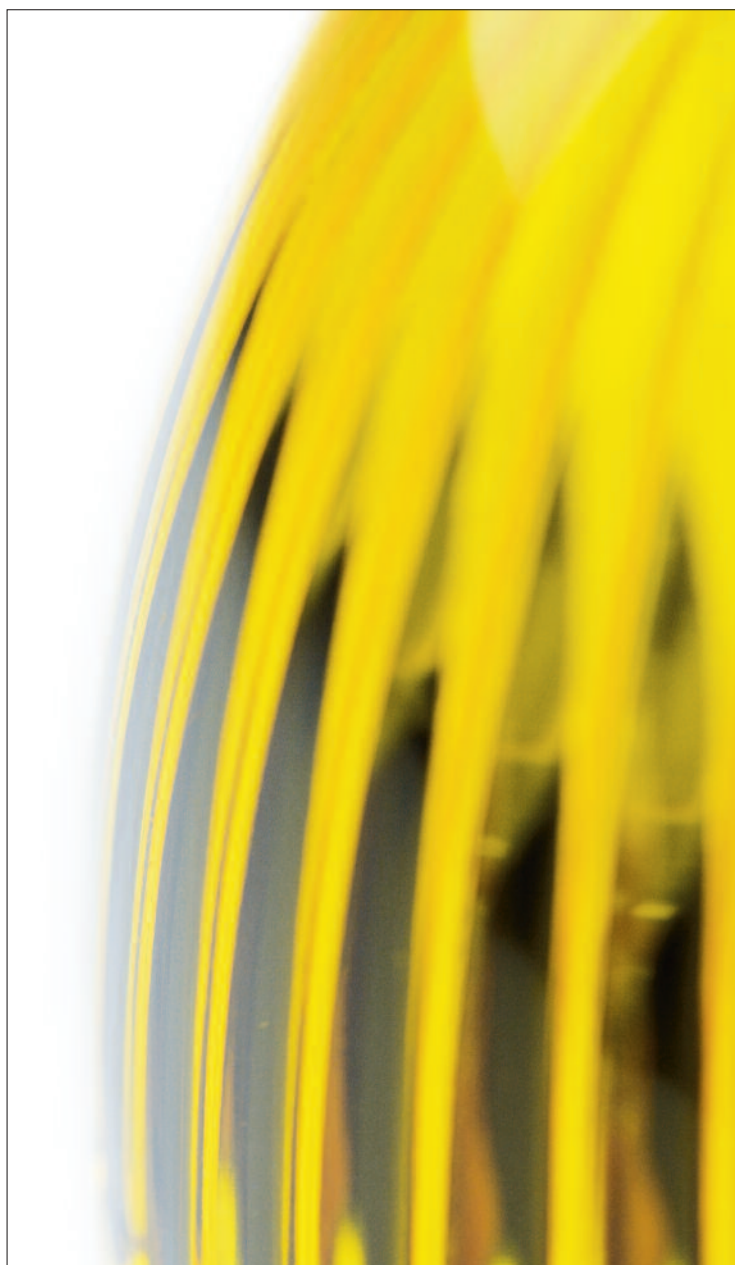
### Blinking light yellow

with blinking bulb, incl. lamp, 230 V, IP 44

Item No.: 2902130

EAN: 4250035406803

Dimensions: ø95 mm, height 130 mm





# We power your drive.

Berner Torantriebe has been a leading manufacturer of garage door openers for more than 55 years.

With its own production facility in Germany, Berner satisfies a wide range of customers' needs and offers practice-oriented solutions.

First class quality, and the reliability of Berner products which comes with it, are ensured by using selected components, endurance testing, and careful final inspection.

This is the Berner team's plan for success, and is the most compelling reason for the great relationship we enjoy with our customers.



## Berner's full range of quality products

- Garage door openers
- Battery / solar-powered openers
- Underground car park and industrial door openers
- Swing and sliding gate openers
- Running gear for sliding gate drives
- Gated lock-ups
- Car park barriers
- Wireless remote controls
- Accessories



## Other brochures about our products



### GA-line

Garage door openers



### GA-line

Underground car park and industrial door openers



### C-line D-line

Swing and sliding gate openers



### B-line

Gated lock-ups and Car park barriers